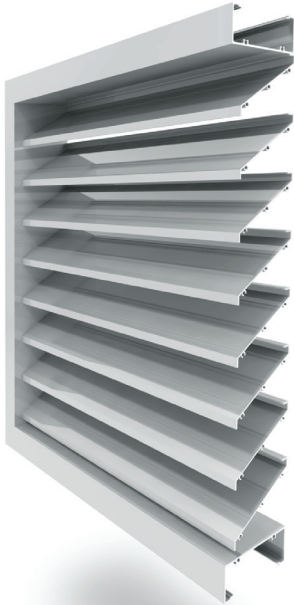
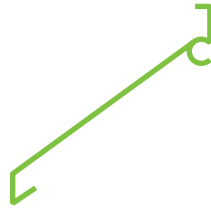


B



SERIES **OPERABLE LOUVRE** DESIGN



The B Series louvre lets you deliver maximum airflow performance naturally while achieving the weatherproof security of our optimised extruded aluminium lipped design.

The Airocle **B Series** has minimal panel depth and is of precision sheet metal construction, providing efficient ventilation for buildings and structures.

- Maximum blade span: 1400mm
- 64% free open area
- Available in aluminium
- Manufactured in Australia

Want to know more? Ask us for a **B Series** Data Sheet or ask our design team for advice on the best ideas for your project.