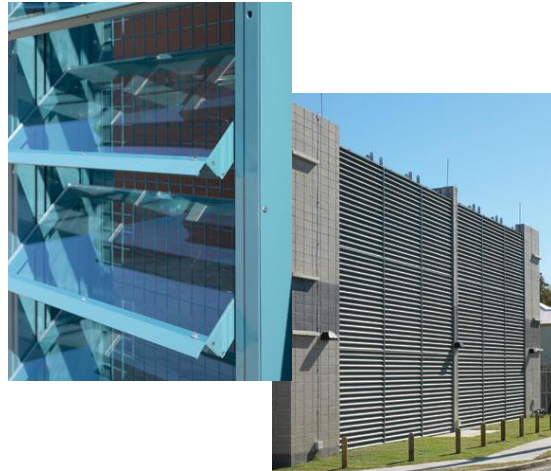


SERVICE GUIDELINES

LOUVRES *Fixed and Operable*



Inspection Requirements

Fixed and Operable Louvres should be inspected on a 3-6 month basis to ensure the basic integrity of the Louvre.

Recommended cleaning of Louvre blades and frames:

- Cold water hose down of surface dirt to the inclination surfaces
- Warm soapy detergent wash over all surfaces
- Clean cold water hose down
- Allow to air dry (do not allow to air dry before rinsing off the detergent)

The above process must be carried out at least once every 6 months. Should the Louvres be 500 metres or less from salt water environment then the process should be carried out at least once every 3 months.

Recommended regular inspections to be carried out on Operable Louvres:

- Check vents for damage, wear or corrosion
- Check and ensure that the vents and all components such as hinges, cables, etc., are free from obstruction and capable of operation
- Check drain holes and internal drain channels are clear
- Ensure rams/actuators are in good working order
- Check operating time of system

For all necessary repairs call Airocle 1800 805 062

15 Redbank Place
PO BOX 583 PICTON NSW 2571
service@airocle.com.au

